



# **STIRCHLEY PRINTWORKS: VISITOR ACCESS GUIDE**

Welcome to Stirchley Printworks! We are an open access, artist-led printmaking studio in South Birmingham. We aim to make printmaking accessible to all, so we have made this access guide to make your visit to Stirchley Printworks as easy as possible.

If you have any questions that aren't covered in this guide, please feel free to email us at [stirchley.printworks@gmail.com](mailto:stirchley.printworks@gmail.com)

## **GETTING TO STIRCHLEY PRINTWORKS**

### By Train

Our nearest train station is Bournville, which is approximately 5 minutes walk to Stirchley Printworks. Bournville Station has a ramp up to street-level and the journey from Bournville station to Stirchley Printworks is mostly flat or downhill, with a slight hill at the end.

Bournville station is located on the 'Cross City Line'. If you are travelling from outside of Birmingham, you can catch the train to Bournville from Birmingham New Street Station.

### By Bus

The number 11 and number 45 buses both stop in Stirchley. Our nearest bus stop is on Pershore Road, which is approximately 5 minutes to Stirchley Printworks. The route from Pershore Road to Stirchley Printworks is up a slight hill.

### By Car

Stirchley Printworks has free on-site car parking. The car park has an uneven surface in places and some parts are sloped. The studio is located approximately 30 metres from the car park. There are no designated bays.

The car park looks like this:

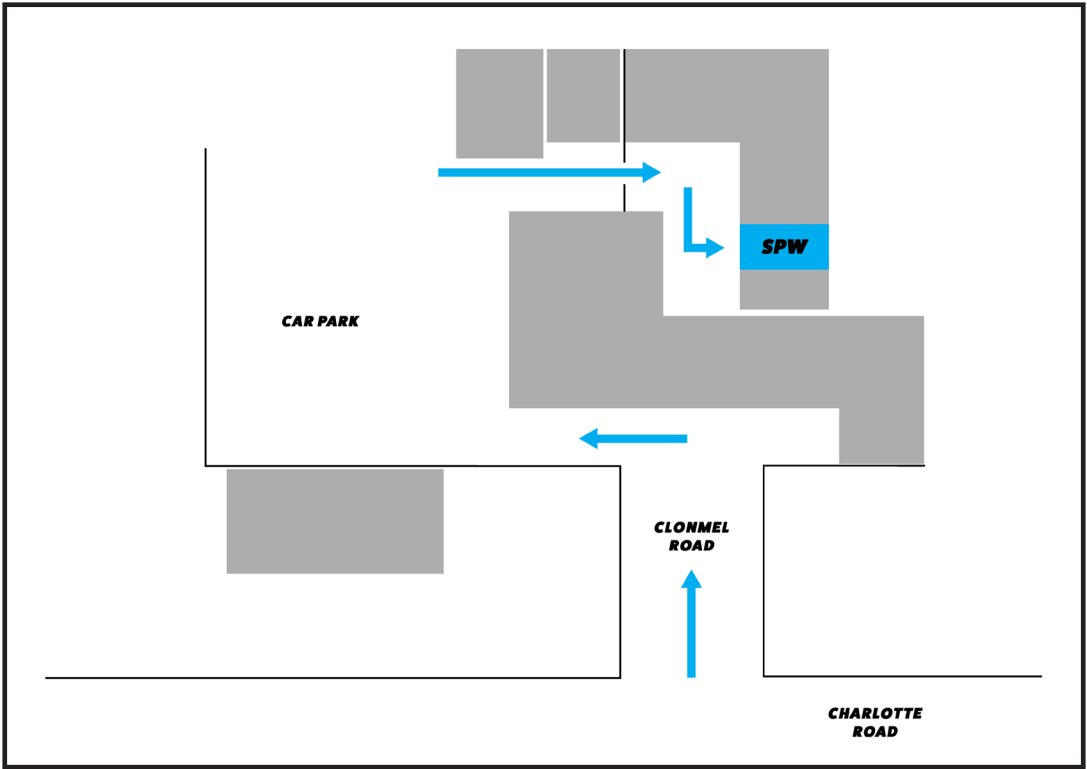




# **STIRCHLEY PRINTWORKS: VISITOR ACCESS GUIDE**

## **LOCATING THE STUDIO**

Stirchley Printworks is located on Clonmel Road Business Park. Our studio is inside an industrial unit, which means it can be tricky to find! To make it easier to find us, we have included a map:



The entrance to Clonmel Road Business Park looks like this:







## **STIRCHLEY PRINTWORKS: VISITOR ACCESS GUIDE**

Once you're at Clonmel Road Business Park, Stirchley Printworks can be found inside the covered over section. It looks like this:



Once you're inside the covered over section, you will need to go straight ahead and then turn right. Stirchley Printworks is in Unit 8A, on the left hand side.

We normally have an A-Frame sign outside that says 'SPW' and we have a sign on our door as well. You can come inside or knock on the door and someone will answer.







# **STIRCHLEY PRINTWORKS: VISITOR ACCESS GUIDE**

## **INSIDE THE STUDIO**

Stirchley Printworks is a lovely, bright studio to work in. The entire unit is on one level and the entrance is flat without any steps. There is enough space for a wheelchair to move around the studio.

There are three main areas to the studio. A seating/working area at the front with tables and chairs. It looks like this:



A printing area in the middle with all the different presses. It looks like this:





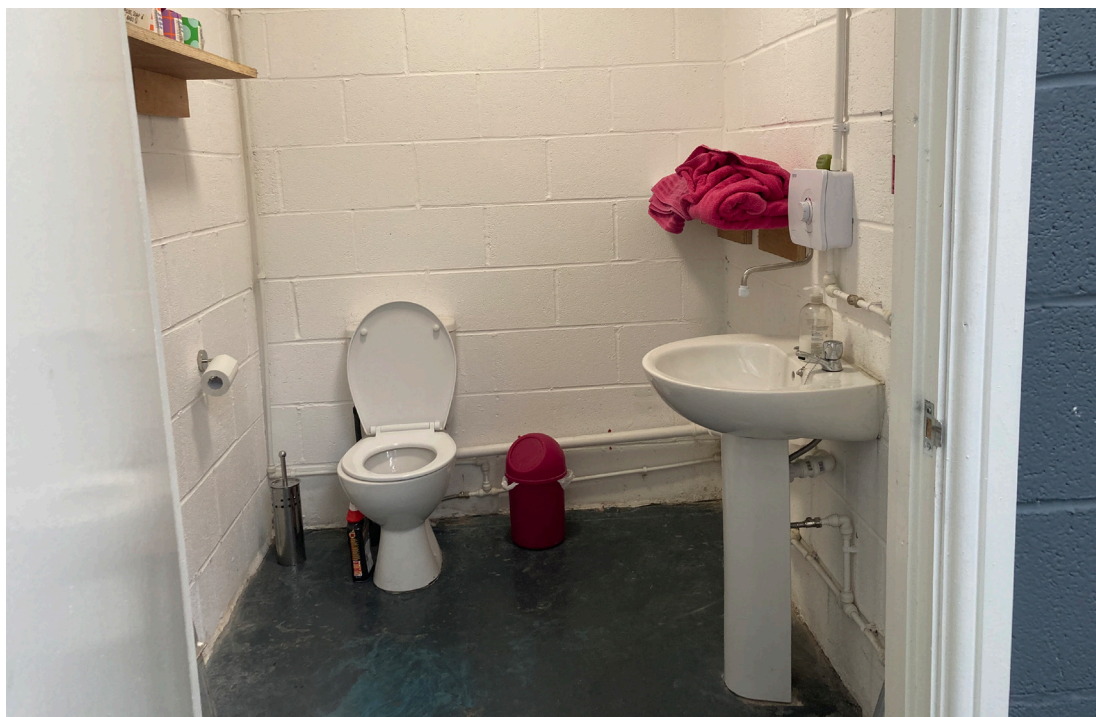


## **STIRCHLEY PRINTWORKS: VISITOR ACCESS GUIDE**

A covered wash-out area at the back where we do all our cleaning and chemical processes. It looks like this:



We also have a toilet, which is at the back of the studio. It looks like this:



Our studio has access to drinking water and a kitchen area with a kettle and fridge. We have dairy and oat milk available to use, as well as different types of tea and coffee (caffeinated and decaffeinated) and soft drinks. We also keep a well-stocked biscuit tin!



# **STIRCHLEY PRINTWORKS: VISITOR ACCESS GUIDE**

## **COVID-19 PROCEDURES**

You are very welcome to wear a mask at Stirchley Printworks, although we do not currently require visitors or members of staff to do so. Hand-sanitiser is available in the studio for anyone to use.

Due to the nature of our classes, social distancing is often not possible but if this is of concern to you, please feel free to contact us before your class to discuss your situation by emailing [stirchley.printworks@gmail.com](mailto:stirchley.printworks@gmail.com).

## **SAFETY IN THE STUDIO**

Stirchley Printworks is an inclusive and welcoming studio so we ask guests, members and staff to behave in a manner that is considerate of others.

As we are a working studio, all attendees should wear appropriate clothing and footwear in the studio. This includes closed-toe shoes and clothes that you do not mind getting ink on! Due to the open-access nature of the studio, there may be multiple printmakers working in the studio at the same time so we ask that all attendees consider the safety and comfort of others when carrying out activities in the studio.

There is a first-aid kit (Including eye-wash materials) on the wall by the entrance to the studio. In the event of a medical emergency, please call 999. Fire-extinguishers are located by the entrance to the studio. In the event of a fire, please leave the studio in a calm and orderly manner and make your way to the car park via the fire-exit, located just outside the studio entrance.

COSHH sheets for all chemicals and risk assessments for all machinery are located by the door of the studio in purple folders. If you need any further information regarding chemicals or processes, please contact us at [stirchley.printworks@gmail.com](mailto:stirchley.printworks@gmail.com).

## **IF YOU WOULD LIKE MORE INFORMATION**

We are always happy to answer any questions that you may have about the studio or your access needs. We are also happy to give you a tour of our studio if you would like to visit before your workshop or event.

If you would like to speak to us directly, please send us an email at [stirchley.printworks@gmail.com](mailto:stirchley.printworks@gmail.com) and we will get back to you as soon as possible.